

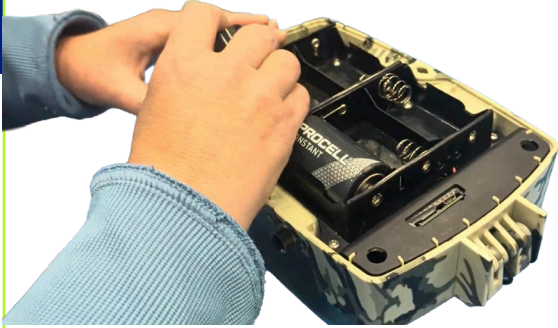
Get your APEX field-ready.



QUICKSTART GUIDE: INSTALL BATTERIES, MEMORY CARD + ACCESSORIES

1

Insert batteries



- » Unscrew four thumbscrews on lid
- » Remove lid carefully
- » Install 6 fresh Alkaline D cell batteries (correct orientation)

High-quality Alkaline D cells, same brand/batch preferred

2

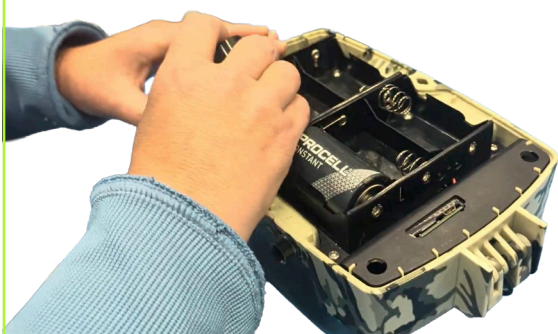
Insert memory card



- » Verify memory card is present and properly seated
- » Check card has sufficient free space

3

Replace cover



- » Align lid fins properly
- » Check for leak paths
- » Tighten thumbscrews to 3.5 inch-pounds (cross pattern)
- » Confirm lid sits flush

DO NOT over-tighten!
Can cause permanent damage.

4

Connect cell antenna



Install antenna hand-tight (points upward)

5

Connect iridium antenna



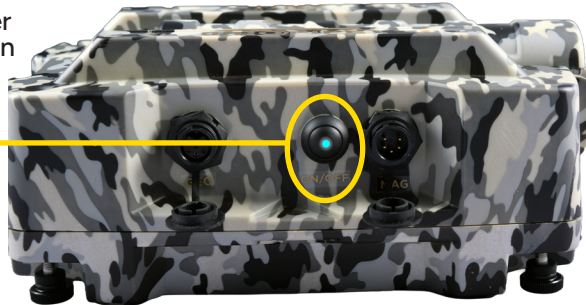
Get your APEX field-ready.

SYSTEMS CONFIGURATION + TEST



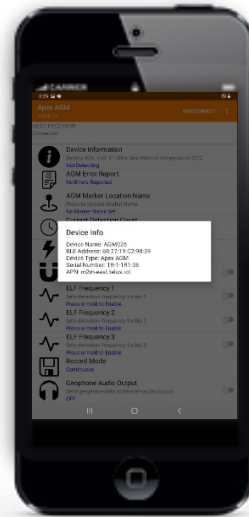
1 Test power

Power Button



- » Press power button briefly
- » Verify blue light comes on solid
- » Listen for 4 consecutive beeps
- » Confirm blue light flashes once per second
- » Wait for cellular connectivity (short successive beeps)

2 Test disk format



- » Connect to AGM via PigView Mobile
- » Navigate to Disk section
- » Long click 'Disk Format'
- » Confirm format operation
- » Verify completion and ready status

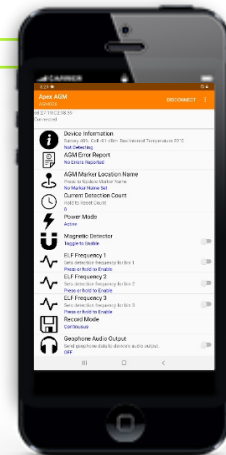
Critical Warning
Only format if data has been previously downloaded

3 Configure settings

- » Review all current settings
- » Configure power management
- » Configure detection settings per survey requirements
- » Verify cellular communication active
- » Set appropriate sensitivity levels
- » Save all changes

Key Settings:

Magnetic Detector, ELF Frequency Bins, Power Mode, Cellular Enable



4 Systems test

- » Verify stable Bluetooth connection
- » Test real-time data streaming
- » Check cellular connectivity indicators
- » Test detection systems
- » Verify battery level adequate
- » Document unit serial and configuration

5 Power down

- » Hold power button for 5 seconds
- » Release button after beep
- » Blue light goes solid
- » Wait for complete shutdown (within 30 seconds)
- » Wait for confirmation beep
- » Verify all lights off

Shutdown Sequence

Hold 5s → Solid light → Beep → Release → Wait 30s

