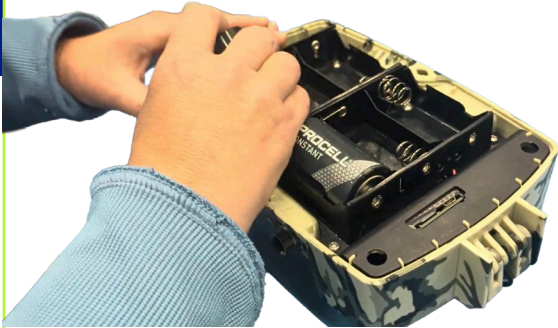


Get your APEX field-ready.

QUICKSTART GUIDE: INSTALL BATTERIES, MEMORY CARD + ACCESSORIES

1

Insert batteries



- » Unscrew four thumbscrews on lid
- » Remove lid carefully
- » Install 6 fresh Alkaline D cell batteries (correct orientation)

High-quality Alkaline D cells, same brand/batch preferred

2

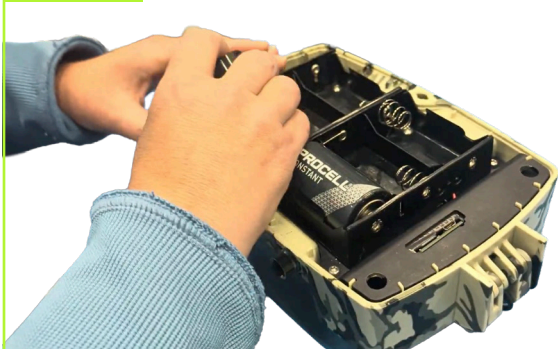
Insert memory card



- » Verify memory card is present and properly seated
- » Check card has sufficient free space

3

Replace cover



- » Align lid fins properly
- » Check for leak paths
- » Tighten thumbscrews to 3.5 inch-pounds (cross pattern)
- » Confirm lid sits flush

DO NOT over-tighten!
Can cause permanent damage.

4

Connect cell antenna



Install antenna hand-tight (points upward)

5

Connect iridium antenna

